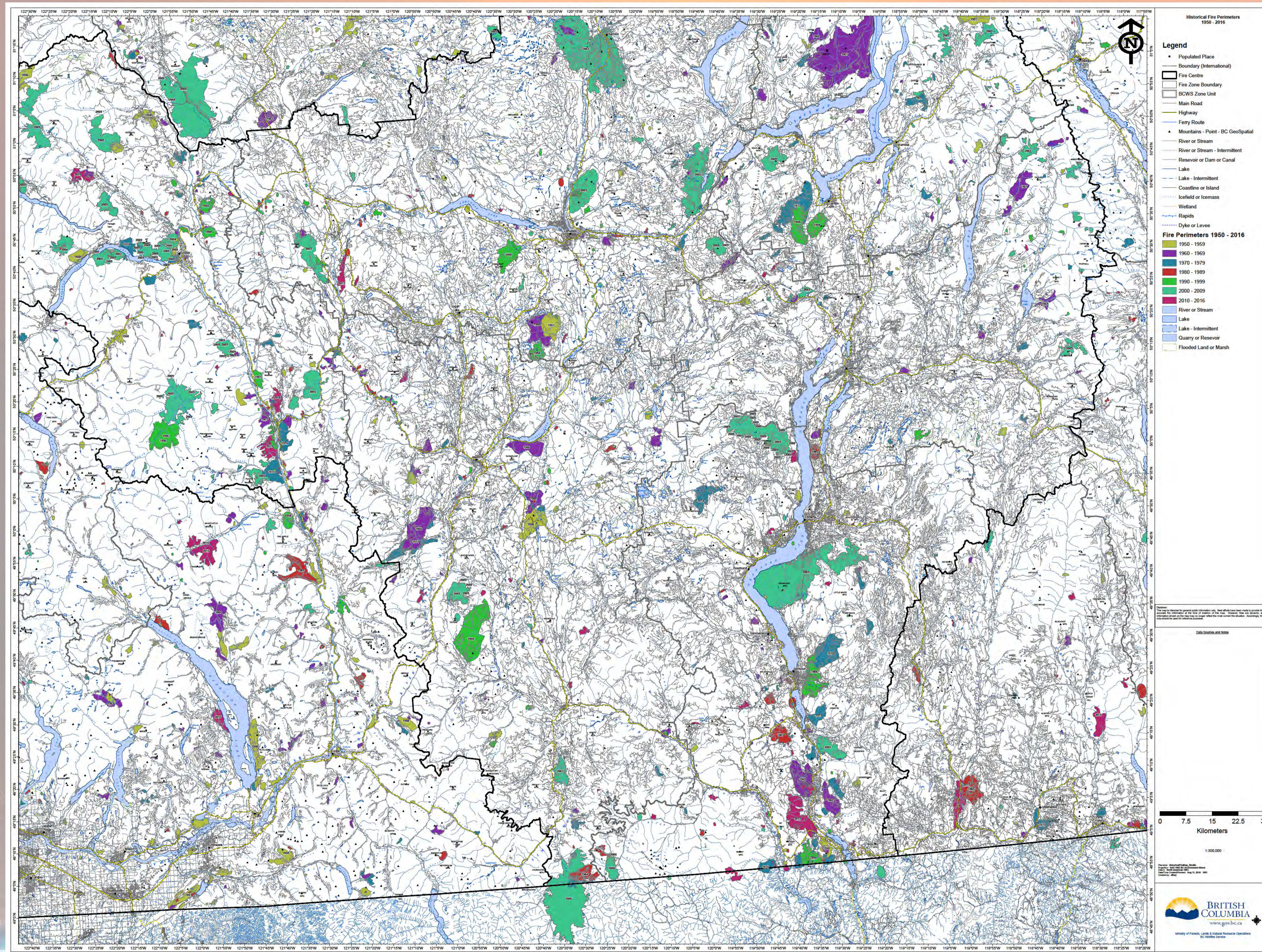
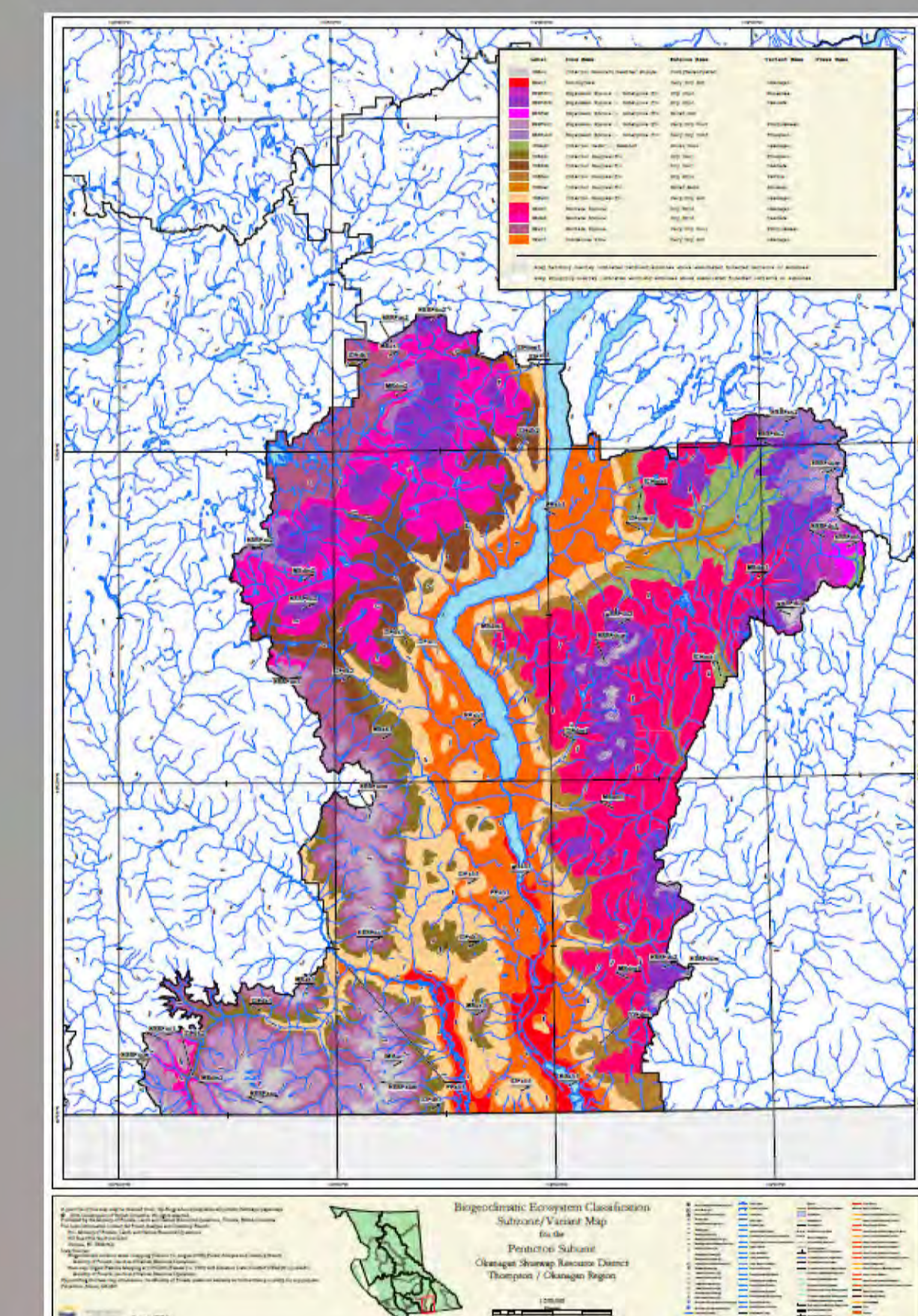


Wildfire History of the Okanagan Area



Natural Disturbance mapping for the Okanagan Area



BIOGEOCLIMATIC Zones of the Okanagan Area

Data quantity & quality	cover type ¹	fire type ²	fire intensity	mean fire return interval (yrs)			fire size (ha)	
				minimum	average	maximum	minimum	maximum
good	Pl, Sc, Bl	surface	low	150-200	200-300	350-500	1-5	50-500
	Pl, Sc, Bl	surface & crown	medium-high					10000
¹ Pl - Kingdom spruce								
medium	Pl, Sc, Fd, Se, Bl	surface & crown	medium-high	125-175	175-275	275-350	1-5	50-500
								>5000
¹ Fd - Douglas fir								
medium	grass	surface	low	4-5	5-15	15-25	1-5	5-50
								50-150
¹ Gr - grass								
very good	Fd, Py, Fy	surface	low	4-5	5-15	15-25	1-5	5-50
	Fd, Py, Fy	crown	medium-high	rare	rare	rare	1-5	5-50
¹ Fy - yellow pine								

TYPICAL HISTORIC PATTERNS OF WILDFIRE DISTURBANCE BY BIOGEOCLIMATIC ZONE

The wildfire history has been shaped by wildfire suppression and ignition types/patterns. This area is under urban sprawl with wildfires occurring frequently in the valley bottom to coincide with this urban sprawl wildfires.

